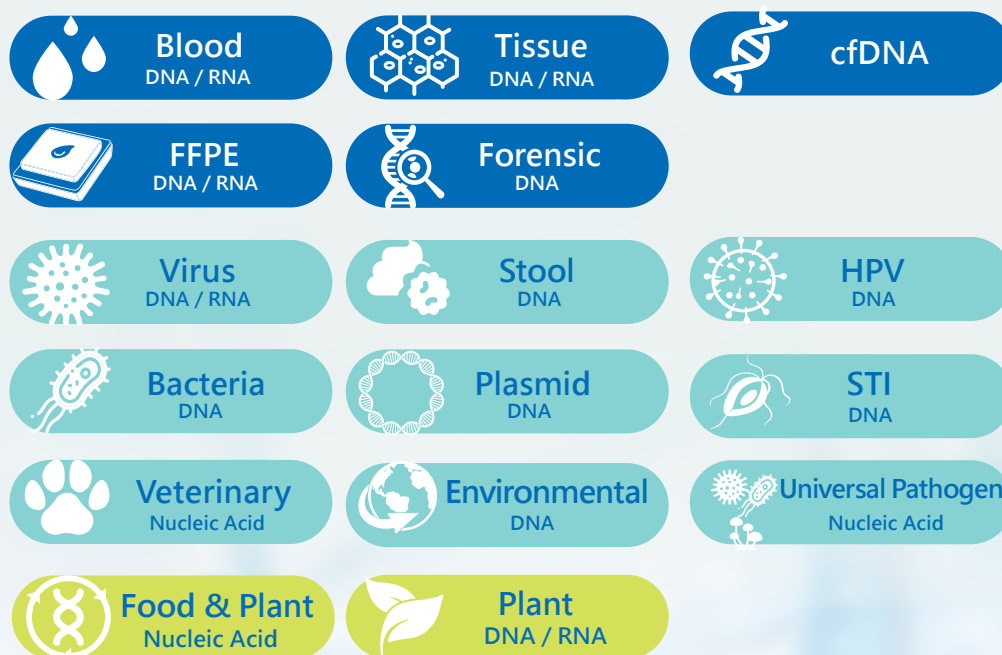


Magnetic bead reagent kits



Category	Target	Specimen	Downstream applications
Body fluid (cfDNA)	DNA	Whole blood, Buffy coat, Bone marrow, Swab, Serum, Plasma, Stool	
	RNA		
Tissue	DNA	Tissue, Cells, Urine, Whole blood, Swab, FFPE	PCR-based analysis NGS
	RNA		
Environmental	DNA	Plant, Water, Soil, Air	
	RNA		
Pathogen (Bacteria/ Virus/ Fungi)	Nucleic acid	Liquid/ Solid Bacteria culture, BAL, Sputum, Whole blood, Serum, Plasma, Urine, Saliva, Swab, Mycoplasma, Cervical swab, Liquid-base cytology samples	Pathogen detection HPV detection Gene cloning Biotechnology-based tool PCR-based analysis
Food and feed	DNA	Vegetables, Fruits, Processed food	PCR-based analysis Food pathogen detection
Forensic	DNA	Blood, Semen, Fingernail, Hair, Chewing gum, Cigarette butts, Oral swab, Touch items	PCR-based analysis STR

V: Recommended (Internally validated kit with proven extraction efficiency on the sample type and target)

▲: Compatible (Not internally validated yet, it could be used on the sample type and target)

Sample Source	Sample Type	Target	Blood DNA (61E)	Blood DNA (61E-8S)	Blood RNA (621)	Blood RNA (622)	cfDNA (61C)	FFPE DNA (61P)	FFPE RNA (62P)	Food & Plant Nucleic Acid (6GM)	Plant RNA (6K3)	Bacteria DNA (61G)	Tissue DNA (6T2)	Tissue RNA (6K2)	Fungi DNA (61F)	Plasmid (6PE)	Forensic DNA (6TF)	eDNA (6EM)	Veterinary (6VT)	Stool DNA (6SC)	Universal pathogen Nucleic Acid (6UP)	Virus RNA (665)	Virapid Nucleic Acid (685)	Virus DNA (615)	Virus RNA (Promote 665) (635)	STI DNA (65T)	HPV DNA (61H)	Rice DNA (619)
Blood	Blood	gDNA	V		V	V											▲		V									
		RNA											▲	▲														
	Leukocyte	gDNA	V																									
		RNA			V	V																						
Bone marrow	Pathogen	Parasite																	V		▲							
		Bacteria										V							V		V							
		Virus																	V		V	V	▲					
Bone marrow	Bone marrow	gDNA	V									V																
Plasma	Pathogen	Bacteria																	V		V							
		Virus																	V		V	V	▲					
Serum	Pathogen	Bacteria																	V		V							
		Virus																	V		V	V		V	V			
Plasma/Serum	Plasma/Serum	cfDNA					V																					
Urine	Urine	gDNA											▲				▲				▲	▲						
		RNA											V								▲	▲						
		cfDNA					▲																					
	Pathogen	Parasite																			▲	▲					V	
		Bacteria										V									V	V					V	
		Virus													▲						V	V	V				V	
Broncho-alveolar lavage (BAL)	Pathogen	STI																			▲						V	
		BAL										V	V								▲	▲						
Saliva	Pathogen	Bacteria										V	V				V				▲	▲						
		Virus																			V	V	▲					
Sputum	Pathogen	Bacteria										V									V	V						
		Virus																			V	V						
VTM/UTM	Pathogen	Bacteria										V							V		V	▲	V	V	V	▲	▲	
		Virus																	V		V	▲	V	V	V	▲	▲	
	HPV																				V	▲					V	
Swab	Pathogen	STI	▲										▲				V				V	V		▲				
		Bacteria										V	▲						V		V	V					▲	
		Virus																	V		V	V	V			▲		
		HPV																			V	▲					V	
Culture cell	Cells	gDNA	▲									V									V	V						
		RNA											V															
Culture bacteria	Bacteria	gDNA										V																
		RNA											V															
Cell culture supernatant	Bacteria with plasmid	Plasmid DNA														V												
Tissue	Pathogen	Bacteria										V									▲	▲						
		Virus																			▲	▲						
		Formalin-fixed, paraffin-embedded (FFPE)																			▲	▲						
Stool	Pathogen	gDNA																			V	▲						
		Parasite																			V	▲						
Plant: Seed, Leaf, Flower	Pathogen	Bacteria										V									V	▲						
		Virus																			V	▲						
Food, Feed	Pathogen	Bacteria										V																
		Food, Feed																										
Rice	Rice	gDNA										V																
Environmental (Soil, Air, Water)	Pathogen	Bacteria										▲							V									
		Virus																	V									
Swab	STI	Nucleic acid													V						V	▲				V		
Yeast	Yeast	Nucleic acid													V						V	▲						
Fungi (Filamentous)	Fungi (Filamentous)	Nucleic acid													V						V	▲						
Forensic	Blood stain	gDNA																	V									
		Semen stain																	V									
		Dried blood spot																	V									
		Chewing gum																	V									
		Cigarette butt																	V									
		Finger nail																	V									
		Hair root																	V									
		Stamp																	V									